



Heavy-load corbel SLK®-ALU-TR / -TQ

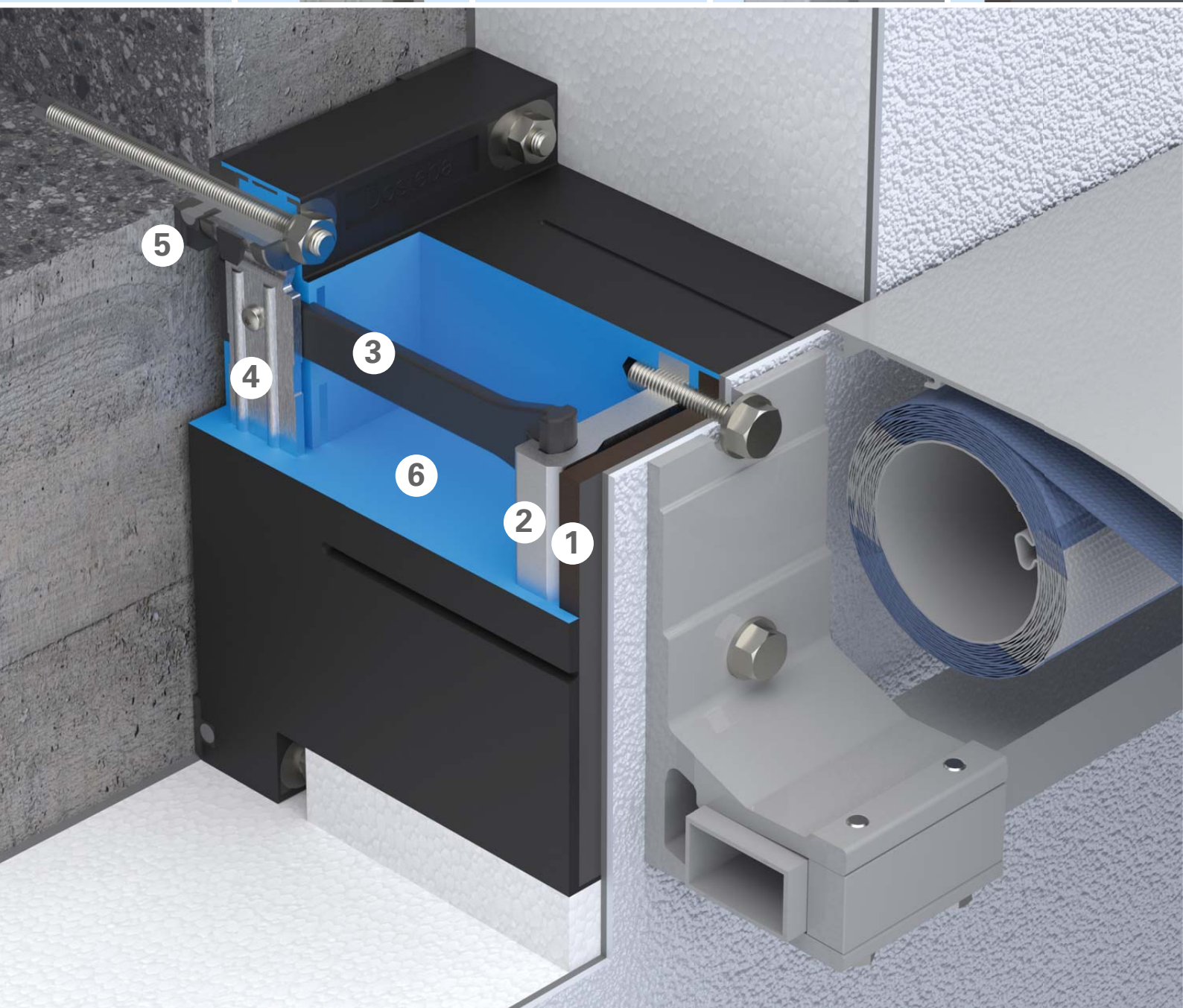


Dosteba

*Elemente sind
Elements are
unsere Stärke
our strength*

Heavy-load corbel SLK[®]-ALU-TR / -TQ

Thermal bridge-free fixation in thermal insulation composite systems



Assembly



Fastening material, tools and loads



Permitted loads

The recommended partial safety factors of the resistance of the ultimate limit state (GZT), an influencing factor of exposure time=1.20, and a partial safety factor of exposure $\gamma_F=1.40$ are taken into account.

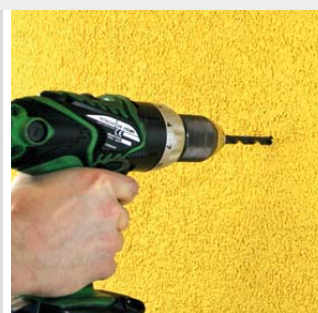
		SLK®-ALU-TR	SLK®-ALU-TQ
vertical	$F_{V,zul}$	6.45 - 16.70	5.58 - 16.40
	$F_{Z,zul}$	21.90	21.90
	$F_{D,zul}$	48.10 - 52.40	68.90 - 79.70
	M_{zul}	1.60	1.53 - 2.24
horizontal	$F_{V,zul}$	4.50 - 9.45	7.74 - 12.80
	$F_{Z,zul}$	21.90	21.90
	$F_{D,zul}$	48.10 - 52.40	68.90 - 79.70
	M_{zul}	1.13 - 1.45	1.86 - 2.80

$F_{V,zul}$ kN Permitted transverse force on fixation element $F_{D,zul}$ kN Permitted compressive stress on fixation element

$F_{Z,zul}$ kN Permitted tensile force on fixation element M_{zul} kNm Permitted bending load on fixation element

Further information and explanations can be found in the current technical documentation. For safety-relevant loads, the provisions of the general building supervisory approval Z-10.9-576 and ETA-21/0722 apply.

- 1 Compact plate (HPL) for optimum pressure distribution on the surface
- 2 Aluminium plate for screwing the attachment part
- 3 Tension rods made of a low-fibre synthetic material (polyamide) guarantee the required stability
- 4 Steel console for friction-type screw assembly with the masonry
- 5 Injection feet to eliminate ring gaps
- 6 PU foam with a volumetric weight of 350 kg/m³
- 7 Injection-threaded rod FIS A M10 x 150
- 8 Injection-anchor sleeve FIS H 16 x 85 K
- 9 Injection-mortar FIS V Plus 300 T
- 10 Static mixer FIS S
- 11 Spacers for the precise alignment onto the facade alignment
- 12 Corrosion protection spray FTC-CP
- 13 Hard metal-hammer drill - Ø12 mm, drill length 210 mm - Ø16 mm, drill length 210 mm
- 14 Drilling gauge for SLK®-ALU-TR / -TQ
- 15 Ejector pistol ABG
- 16 Set of brushes FIS, Ø14 / 20 mm
- 17 Cleaning brush BS, Ø12 mm / M10
- 18 Setting gauge for SLK®-ALU-TR / -TQ
- 19 Open-end wrench, wrench size \diamond 17
- 20 Cartridge press





Heavy-load corbel SLK®-ALU-TR / -TQ

The problem

Infiltrations in thermal insulation composite systems constitute an increased risk for water entering or the formation of condensate water and mould.

The solution

With the heavy-load corbels SLK®-ALU-TR / -TQ these high demands can be certainly met. Attachment parts can be attached securely and with a power-grip.

Your benefit

The fixation becomes even easier, safer and you save valuable time with the properly coordinated tools. Even the slightest slipping is prevented by filling in the ring gaps. This means even more security for you. Additional adhesion is not necessary.

Your advantages

- ✓ No thermal bridges
- ✓ No water infiltration
- ✓ No damages
- ✓ Power-grip assembly for heavy loads
- ✓ Professional tools facilitate assembly
- ✓ Even more stability

The product

Heavy-load corbels SLK®-ALU-TR / -TQ are made of black-coloured, rot-resistant CFC-free PU rigid foam (polyurethane) with four foamed steel consoles for friction-type screw assembly with the masonry, an aluminium plate for screwing the attachment part and a compact plate (HPL), to ensure optimum surface pressure distribution. Tension rods made of a low-fibre synthetic material (polyamide) guarantee the required stability.

Heavy-load corbel SLK®-ALU-TR

- Base surface: 250 x 150 mm
- Thicknesses: 100 – 300 mm
- Useable surface area: 162 x 82 mm

Heavy-load corbel SLK®-ALU-TQ

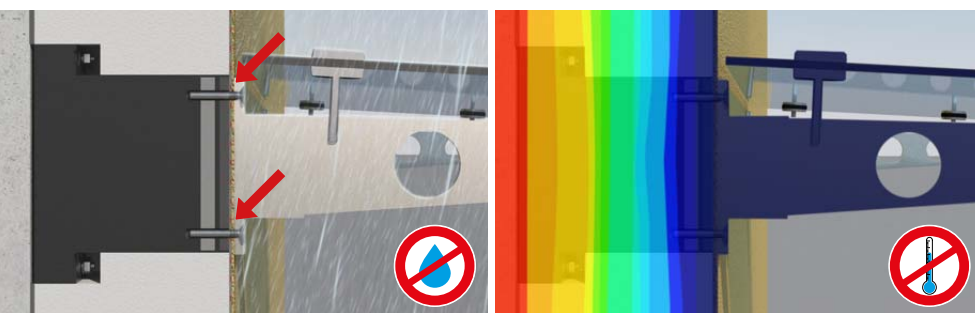
- Base surface: 250 x 250 mm
- Thicknesses: 100 – 300 mm
- Useable surface area: 162 x 182 mm

Test certificates / Assessments



European Technical Assessment
ETA-21 / 0722

National technical approval
AbZ Z-10.9-576



Dosteba AG

CH-8184 Bachenbülach
Phone: +41 43 277 66 00

Dosteba GmbH

D-72770 Reutlingen
Phone: +49 7121 30177 10