

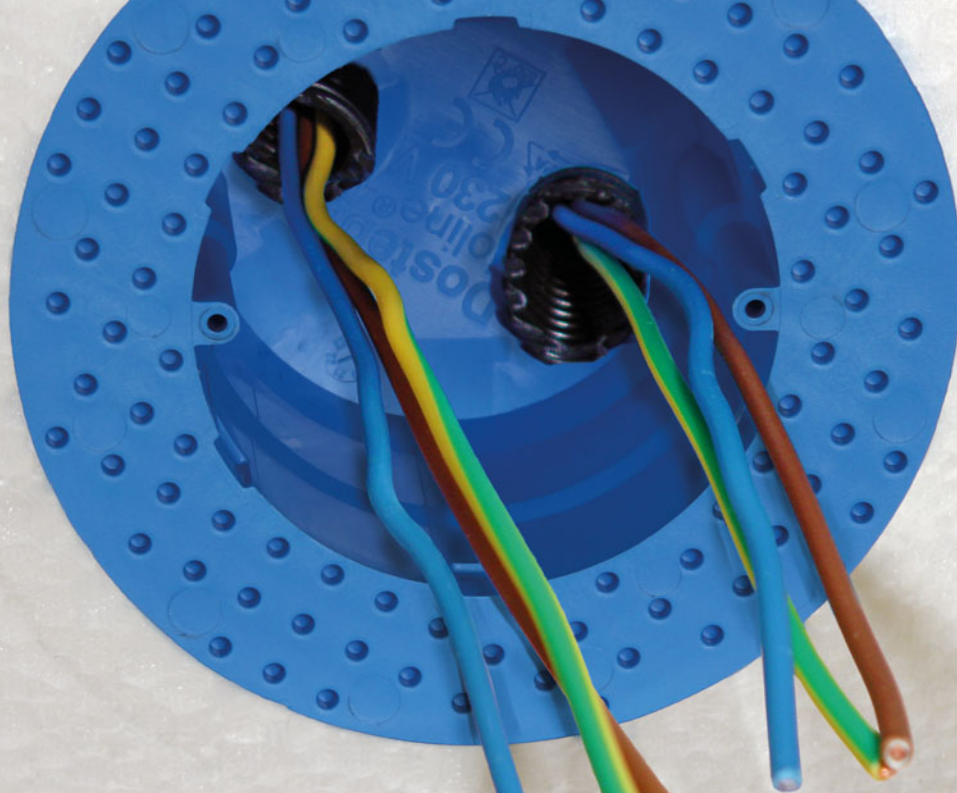


Electric recessed socket Eldoline®-PA



Dosteba

*Elemente sind
Elements are
unsere Stärke
our strength*



Electric recessed socket Eldoline®-PA

The problem

The installation of switches, sockets, lights and sensors in thermal insulation composite systems are potential vulnerabilities.

The solution

Electric recessed sockets Eldoline®-PA are absolutely free of thermal bridges and guarantee a secure fastening of the electrical components. With the rubber plugs supplied on request, the cable or pipe bushings can be sealed cleanly. If necessary, a device holder can be plugged in for mounting lights or sensors.

Our quality

Electric recessed sockets Eldoline®-PA are glued in the insulating panels with PU-Adhesive DoPurCol. Only sheet metal or wood screws are suitable for screw connections into the electric recessed sockets Eldoline®-PA.

Your advantages

- ✓ Simple and efficient assembly
- ✓ For use with all insulation thicknesses from 80 mm
- ✓ No cavities - no thermal bridges

The product

Electric recessed sockets Eldoline®-PA made of flame-retardant plastic. The surface is perforated. Electric recessed sockets Eldoline®-PA are suitable for the thermal-bridge-free fixation of electrical switches and sockets in thermal insulation composite systems made of expanded polystyrene (EPS) and rock wool (SW).

Electric recessed socket Eldoline®-PA

- Internal diameter of holder: 65 mm
- External diameter of rim: 105 mm
- Depth of holder: 60 mm

Insert equipment holder

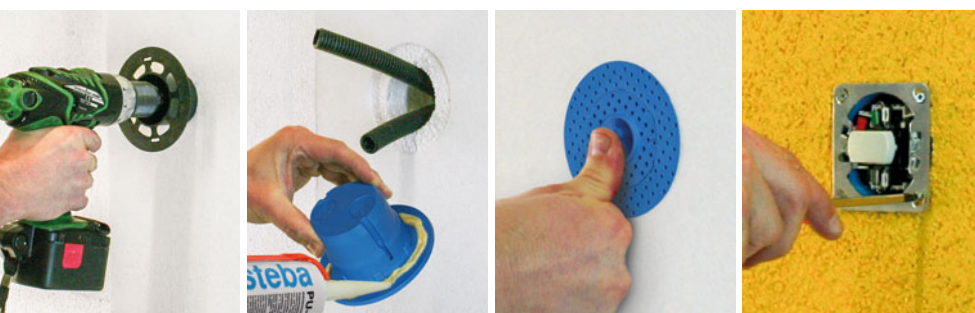
- Diameter: 65 mm
- Thickness: 10 mm

Technical Data

- Fire resistance to IEC 60695-2:
Plastics glow-wire proven 850°C

Fastening material

- Adhesive: PU-Adhesive DoPurCol



Dosteba AG

CH-8184 Bachenbülach

Phone: +4143 277 66 00

Dosteba GmbH

D-72770 Reutlingen

Phone: +49 7121 30177 10